

SIDEKICK LATCH RETROFIT

FM-7.5-128
Rev C
06/26/09

This kit will allow your Sidekick Ramp to be modified to the new lift-bar style latch. The benefits from doing this will include: ease of use, and less parts to maintain.

Please note:

This kit needs to be ordered with Big Wheel Retrofit Leg Kit to make this retrofit possible with cable latch leg assemblies.

Your kit should contain the following parts:

- Latch arm assembly - 1 ea
- Bushing 3/8" ID x 1/2" OD x 3/8" long – 2 ea
- Latch return spring LH - 1 ea
- 3/8-16 x 2 1/2 Hex head cap screw – 2 ea
- 3/8-16 x 3/4 Hex head cap screw – 6 ea
- 3/8-16 x 1 3/4 Hex head cap screw – 2 ea
- 3/8-16 Center lock nut – 8 ea
- 3/8-16 Hex nut – 2 ea
- Cotter pin 1/8" x 1" – 2 ea

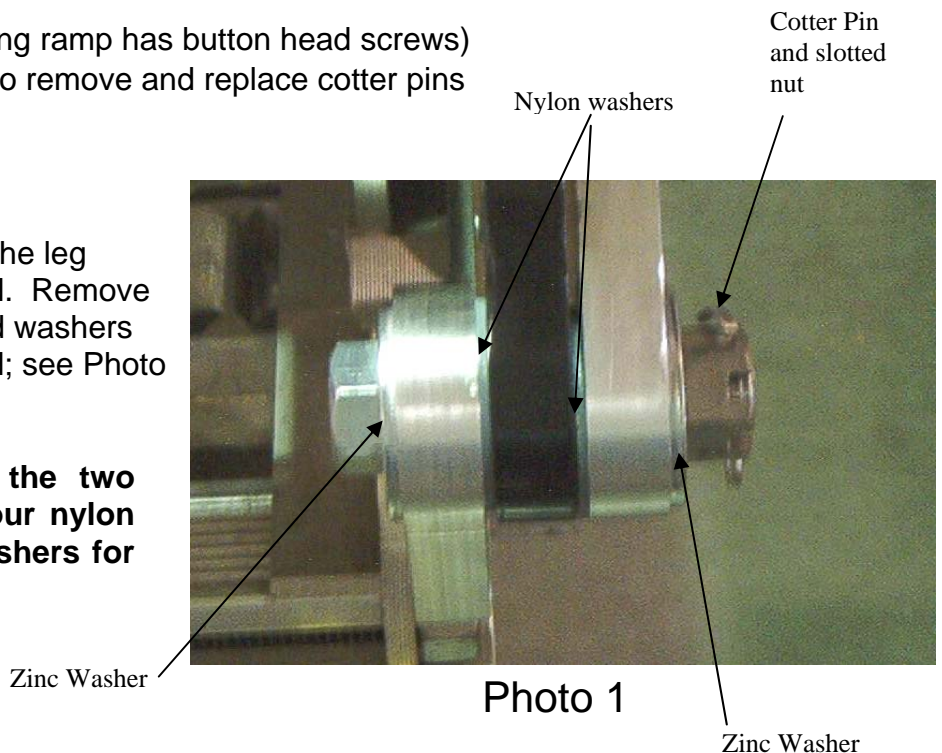
In addition to the parts listed above the following tools will be needed:

- 9/16" Socket and wrench
- 7/32" Hex wrench (if your folding ramp has button head screws)
- Needle nose or regular pliers to remove and replace cotter pins

Let's begin:

To start retrofitting your Sidekick the leg assembly will need to be removed. Remove the cotter pin, slotted nut, bolt and washers where the leg assembly is hinged; see Photo 1.

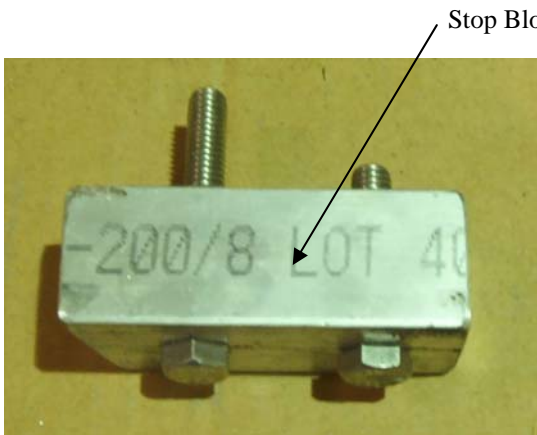
- **You will need to reuse the two bolts, two slotted nuts, four nylon washers and four zinc washers for reassembly later.**



After removing the leg assembly, the extension section of the ramp needs to be removed (this will be the shorter of the two ramp sections). Next, flip the base section of the ramp over; this position will put the strike catches on top (See Photo 2). Remove the strike catch, stop block (see Photo 3) and hinge on each side using a 9/16" socket and wrench. If your folding ramp was manufactured with button head screws a 7/32" hex wrench will be needed to remove these screws.



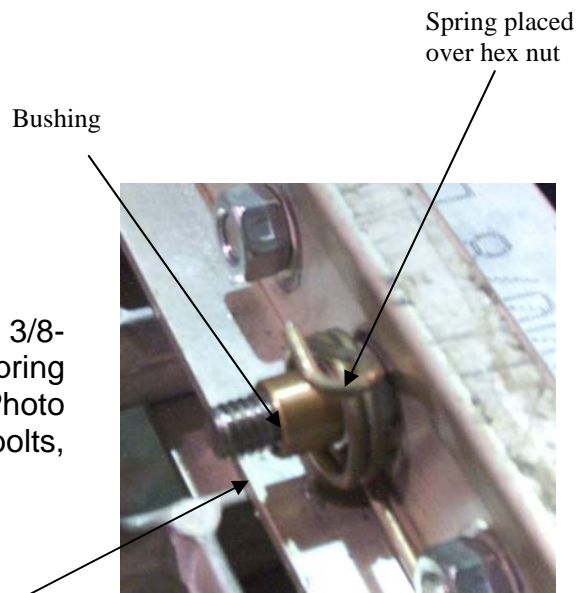
Strike Catch **Photo 2**



Stop Block **Photo 3**

Next, the hinges will need to be reinstalled on each side using (3) 3/8-16 x 3/4 hex head cap screws and center lock nuts on each side of the base rail. The stops will need to be reattached with the 3/8-16 x 2 1/2 in the front and the 3/8-16 x 1 3/4 in the other hole as shown in photo 3 for the right side configuration.

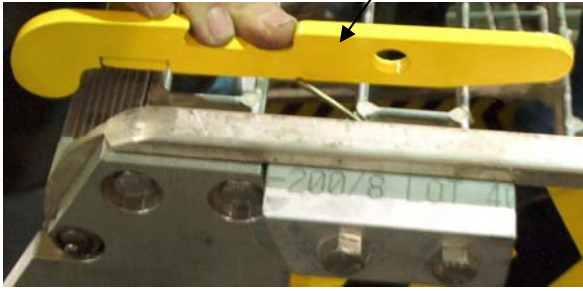
Repeat the previous step for the other side. On the 3/8-16 x 2 1/2 bolt first install a hex nut, then place the spring over the hex nut and finally a bushing as shown in Photo 4. On the left hand side tighten all the nuts and bolts, leaving the long bolt loose. Install the hex nut on this bolt so that the bolt stops flush with the end of the nut, this nut will be tightened later.



3/8-16 x 2 1/2 Bolt

Photo 4

Latch arm assembly

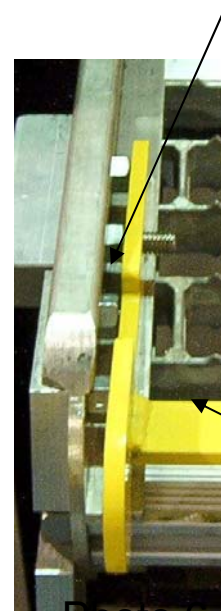


On the latch arm assembly place the notch on the top of the spring as shown in Photo 5. While compressing the spring, align the hole in the latch assembly on the long bolt, install and tighten the center lock nut.

Photo 5

On the left side of the ramp, tighten the hex nut on the long bolt between the ramp rail and latch handle, making sure the bolt goes thru the hole in the latch handle (see Photo 6). Next, install the bushing on the bolt and tighten the center lock nut. Check for spring action, adjust if necessary.

Flip over the ramp base. Lay the extension on top of the base. Align the leg hinge, new leg assembly, and mounted hinge components. Place the nylon washers on each side of the leg hinge (see Photo 1 for orientation), and install the bolt thru the hinge with a flat washer on each side of the assembled hinge. Next loosely install the castle nut until the hole in the bolt allows the cotter pin to be installed. Repeat these steps for the remaining hinge and check for proper leg and latch operation. When the leg assembly rotates freely, turn the cotter pin ends up so that they will not fall out.



Tighten this hex nut after installing the latch arm assembly

Latch arm Assembly

Photo 6

This completes the installation of your Sidekick Latch Retrofit. If you have any questions contact your R•O•M representative at 1-800-827-3692.

Copyright © 2009 R•O•M Corporation. All Rights Reserved. These drawings and the information contained herein are the confidential and proprietary intellectual property of R•O•M Corporation and should not be disclosed to any third party without the express prior written consent of R•O•M Corporation.