

ROADWARRIOR RAMP and CARRIER SYSTEM **INSTALLATION INSTRUCTIONS**

FM-7.5-46
Rev H
8/4/10

Congratulations on your purchase of the R•O•M Roadwarrior Ramp and Carrier System! This system will provide maximum safety and productivity for many years with proper care and maintenance. **Please read and follow these instructions carefully!**

Using the RoadWarrior ramp with apron

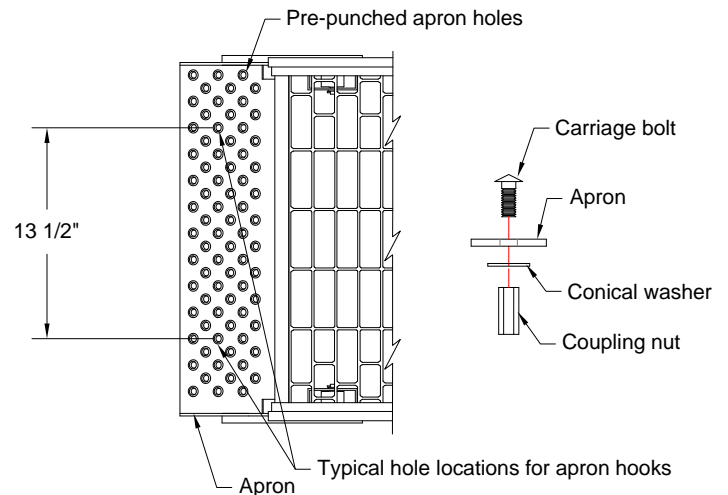
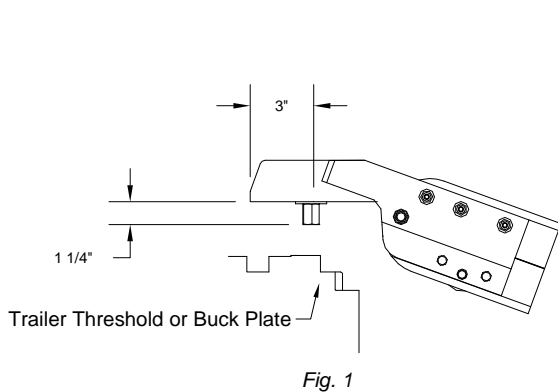
Ramp apron hooks act as an anchoring device for securing the ramp to trailer deck. These apron hooks come pre-installed at 13 1/2" spacing *Fig. 2* for standard width ramps. Hook spacing may vary for custom width ramps.

Ramp hooks may be relocated when necessary to align with pre-existing receiving holes.

To reposition apron hooks:

Note: Be sure bottom of coupling nut is 3" minimum from the front edge of apron to prevent dragging in the carrier *Fig. 1*. The trailer will need to be modified to accept apron hooks if receiving holes are not present.

1. Remove coupling nuts from carriage bolts using a 5/8" wrench.
2. Select desired apron hook locations only where holes are pre-punched. Re-attach apron hooks as shown in *Fig. 2* and tighten until carriage bolt is pulled snugly against apron.



(Skip steps 3-5 if trailer apron hook receiving holes already exist)

3. Mark receiving holes by using the apron hooks as a template.
4. Drill a 7/8" diameter minimum hole size at marked locations.
5. Insert apron hooks into associated receiving holes to secure the ramp.

Using the RoadWarrior ramp with Hook Support

If your trailer utilizes hollow channel brackets mounted to the buck plate, you will need the Hook Support option.

To reposition hook support ramp hooks:

1. Determine where the adjustable hooks will work the best for your application. Weld the hollow channel brackets to the buck plate or trailer threshold *Fig 3*.

Note: Holes or slots may be cut into trailer deck or buck plate as an alternative to hollow channel brackets.

2. Loosen the ramp hook coupling nuts with a 5/8" wrench.
3. Slide ramp hook coupling nuts to desired position and retighten.

Note: Hooks must be 3" minimum away from center when equipped with lift assist.

4. Insert hook support into associated bracket cavities, slots or holes to secure ramp.

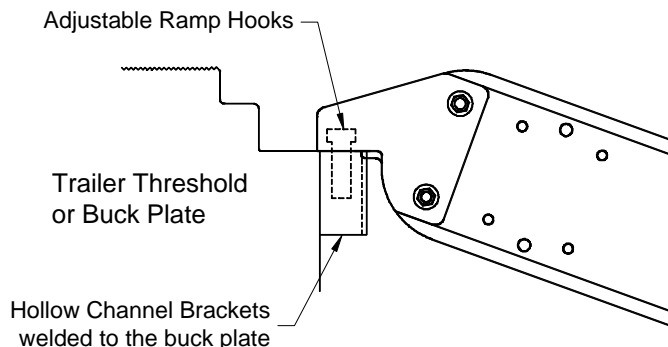
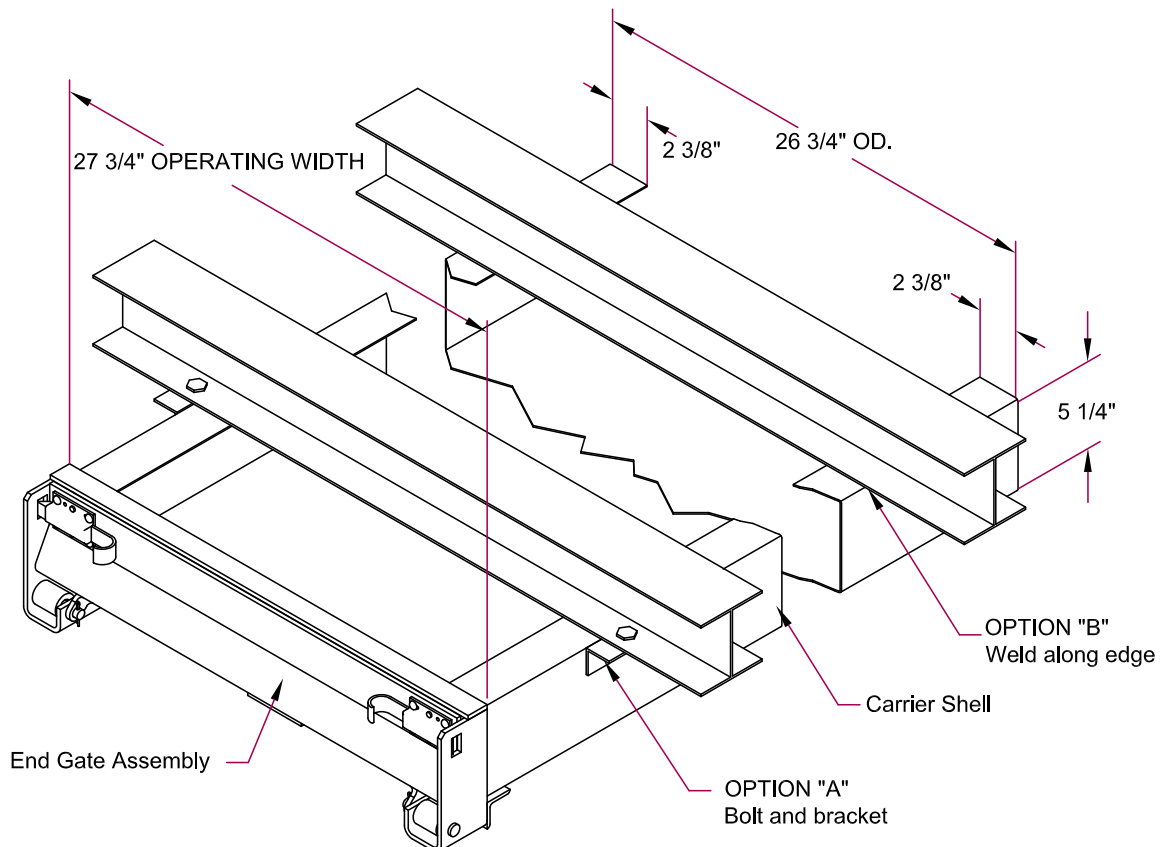


Fig. 3

Installing the RoadWarrior Ramp Carrier under the Trailer

1. Verify all trailer dimensions where the carrier is to be installed:
 - a. Nominal ramp lengths 10', 12' or 14' require 15'-1 3/4" clearance in length
 - b. Nominal 16' ramp require 17'-1 3/4" clearance in length.
 - c. Allow 26 3/4" clearance for width and 5 1/4" clearance for height. The operating width and height at the end gate assembly is 27 3/4" wide and 7 1/6" high.
2. Remove the ramp and any shipping material from the RoadWarrior carrier.
3. Position the carrier in the opening. The carrier should be recessed 1/2" to prevent carrier damage while backing up to a dock. Do not recess any more than 3" from rear of the trailer as it impedes ramp handling.
4. The carrier should be attached to the under body cross members at least every 36" on both sides along length of carrier.
 - a. Trailers with aluminum framing and cross members: Angles or brackets must be welded to the carrier for bolting the assembly to aluminum members (see option A below).
 - b. Trailers with steel framing and cross members: The carrier can be welded directly to steel members (see option B below).



5. Prior to permanent attachment inspect carrier end gate for proper clearance and operation.
6. Stow the ramp in carrier with apron end towards the front.

Note: Ramps equipped with lift assist must have wire tie-downs removed and require special precaution. Place the ramp on the ground with the lift assist in contact with ground. Remove both wire ties and slowly allow the lift assist to open by elevating the apron end of ramp. Place the ramp in the carrier by lifting the trolley frame assembly over the L-Stop in the carrier.

Your ramp and carrier are now ready for use. For proper care and ramp maintenance please reference FM-7.5-140 Rev. C located on R•O•M's web site at www.romcorp.com. If you have any problems, please call R•O•M Corporation at 1-800-827-3692.