



Excellence made to order.



6800 E. 163rd  
Belton, MO  
64012-5463  
816 318-8000  
1-800-827-3692  
FAX 816-318-8100

## ***ROADWARRIOR RAMP APRON REPLACEMENT KIT***

---

FM-7.5-43  
Rev. F  
7/23/10

This kit provides the parts to replace either the Roadwarrior Apron or Lift Assist Apron. Please read the instructions completely before beginning any modifications.

Included in your kit will be the following:

- Roadwarrior Apron or Lift Assist Apron
- 2 ea 5/16-18 x 1 21/64 Hex Head Rolok Screw
- 6 ea 1/4 -20 x 3/4 Hex Head Cap Screws
- 4 ea 1/4 -20 x 1 Hex Head Cap Screws
- 10 ea 1/4 -20 Nylon Insert Stop Nuts
- 2 ea 1/2-13 x 1 Thin Wall Coupler Nut
- 2 ea 1/2-13 x 1 1/4 Carriage Bolt
- 2 ea 1.05 OD x .515 ID Conical Washer
- 1 ea Tie-Rod Cut to Specified Length
- 2 ea 5/8" Cotter Circle SS

In addition to the parts listed above you will need the tools in order to replace the ramp apron:

- 5/32" Allen Wrench (not included)
- 7/16" Socket (not included)
- 7/16" Open Ended Wrench (not included)
- 1/2" Socket (not included)
- 5/8" Open Ended Wrench (not included)
- Torque Wrench (not included)
- Metal File (not included)
- Thread Locker removable type (not included)
- Rubber Mallet (not included)

### **1. Unpacking and Handling**

- a. Unpack and carefully lay out all of the parts. Make sure all parts are included as listed.

## 2. Removing the Old Roadwarrior Ramp Apron or Lift Assist Apron

- a. Using the 7/16" wrench and socket, remove the six screws holding the apron to the ramp rails as shown in Fig. 1. **Note:** Some older ramps may have button head screws holding on the apron. A 5/32" Allen wrench can be used to remove these screws. Discard these parts to avoid confusing them with the new apron hardware.

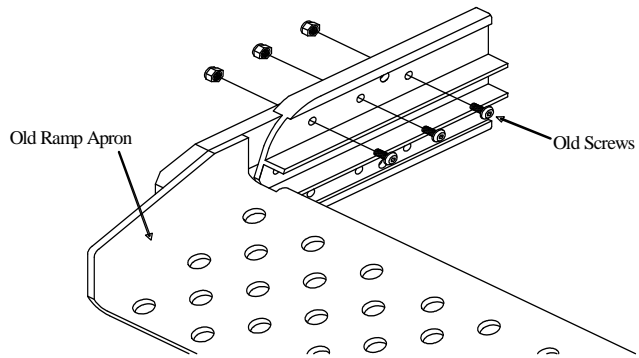


FIG. 1

- b. Flip the ramp over so the roller housing is on top. *Note: Lift Assist Ramps and Sidekick Folding Ramps do not have roller assemblies.* The roller housing can be removed by removing the cotter pin or cotter circle from the clevis pin that goes thru the roller. With the roller parts removed the roller housing and apron support plate can now be removed using a 7/16" wrench and socket. The support plate and mounting hardware can be discarded but the housing, roller, clevis pin and washers will be reused. New cotter circles have been provided.
- c. Using a 1/2" socket remove the two 5/16-18 x 1 21/64 hex head rolok screws from the first tie-rod. Remove the tie rod and these discard parts along with the washers.

## 3. Installing the New Roadwarrior Ramp Apron or Lift Assist apron

- a. Using a metal file remove any burrs that may be on the end of the ramp rail as shown in Fig. 2; burrs can cause interference and not allow the apron to install smoothly.
- b. Install new tie rod then slide new apron onto end of ramp (see Fig. 3). You may need to tap it lightly with the rubber mallet if it is a tight fit.
- c. Install 6 ea 1/4-20 x 3/4 Hex Head Cap Screws and 1/4-20 nylon lock nuts, with the heads on the inside of the rails as shown. Use the 7/16" wrench and socket to loosely install the hardware. *Do not fully tighten the fasteners at this time.*

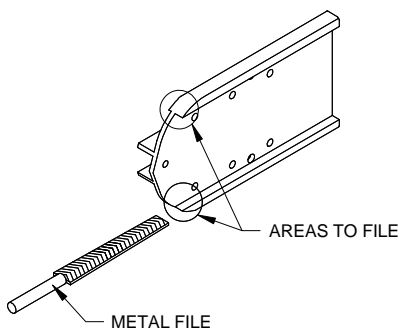


FIG. 2

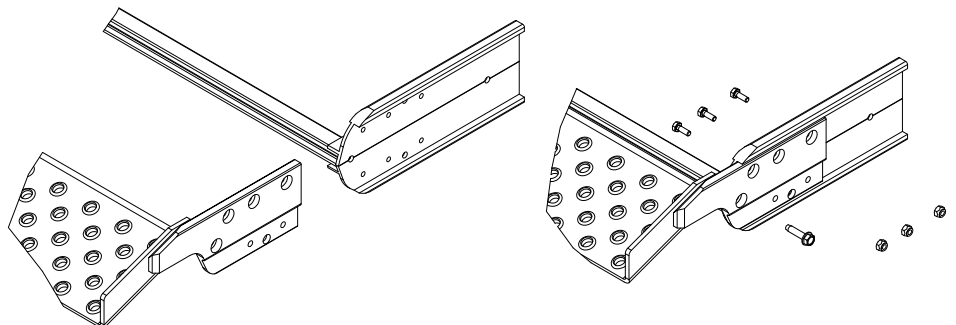


FIG. 3

- d. Place the 1/4-20 x 1" Hex Head Cap Screws through the holes in the apron that correspond to the holes in the roller housing and tighten the 1/4-20 Nylon Insert Stop Nuts on the inside of the roller assembly bracket. Reinstall the roller by referencing Fig. 4 for proper configuration.

*Note: Lift Assist Ramps and Sidekick Folding Ramps do not have roller assemblies on the rails. Older style sidekicks will fasten thru the U-shaped latch catch as well as the ramp rail.*

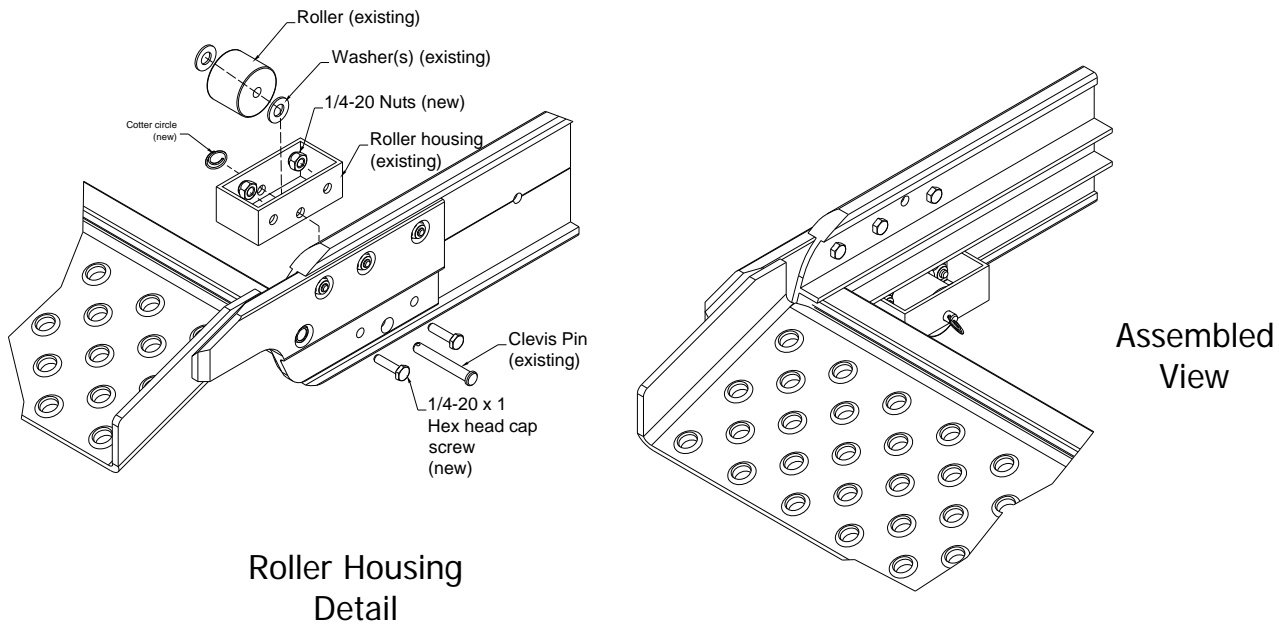


FIG. 4

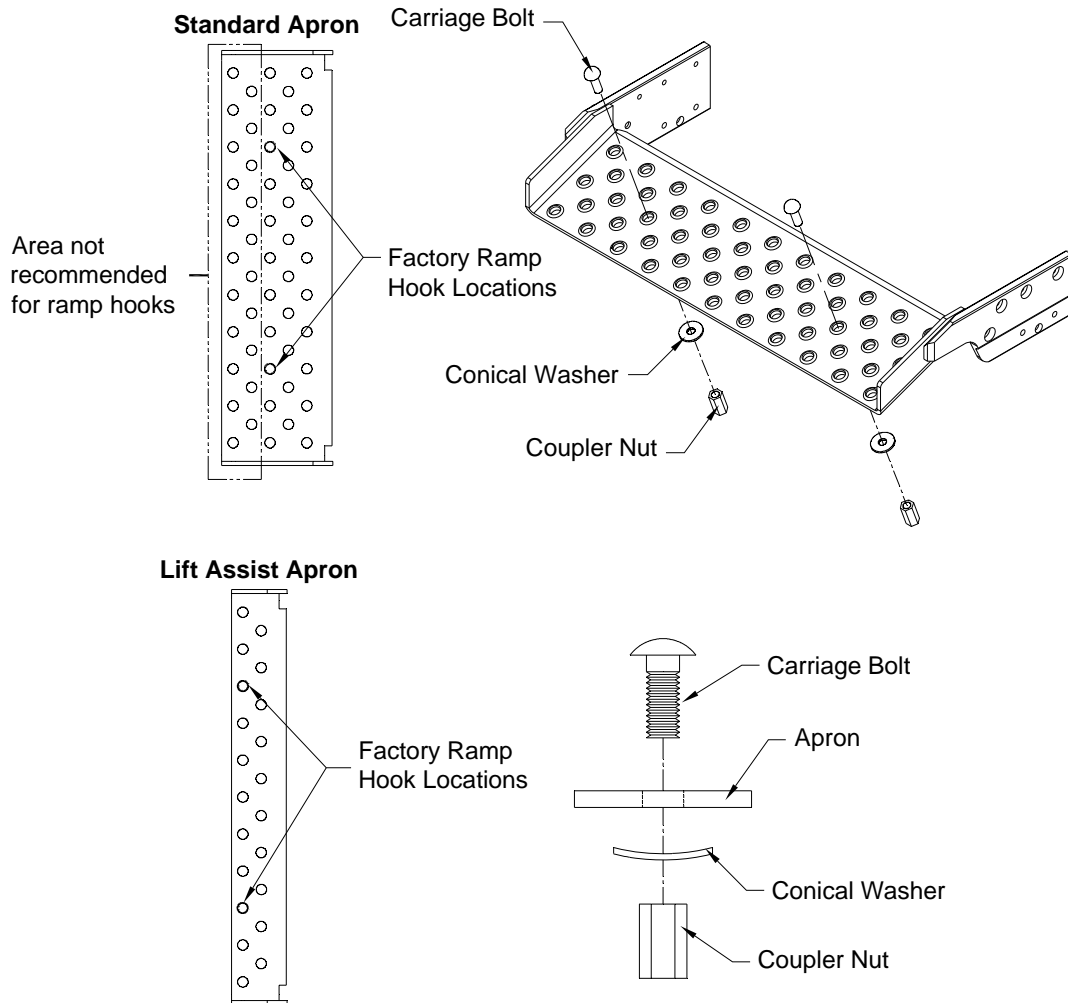
- e. Install the two 5/16-18 x 1 21/64 Hex head rollok screws thru the apron arms and rails into the tie rod using a 1/2" socket and torque wrench.

**CAUTION: DO NOT** over-tighten the screws. Over-tightening the screws may cause them to break off within the extrusion; R•O•M recommends 19.5 ± 1 ft. lbs. of torque.

- f. Lastly tighten all apron bolts.

#### 4. Installing the Ramp Hooks

- a. Determine the hooking positions on the ramp apron that will work best for your trailer. The factory installed ramp hook positions can be seen in Fig. 5. It is recommended that the hooks are not placed any further forward than the factory positions on the apron. This will cause the ramp to drag in the carrier and may make it difficult to remove and/or store the ramp and could also cause damage to the apron itself.
- b. After determining where to install the hooks, place the carriage bolts through the holes in the ramp apron. Place a few drops of thread locking compound to the threads of the carriage bolts, then place the conical washer (dome side away from apron) over the bolt and tighten the coupler nuts with the 5/8" wrench.



**FIG. 5**

**If you have any problems, please call R•O•M Corporation at 1-800-827-3692.**

Copyright © 2010 R•O•M Corporation. All Rights Reserved. These drawings and the information contained herein are the confidential and proprietary intellectual property of R•O•M Corporation and should not be disclosed to any third party without the express prior written consent of R•O•M Corporation.