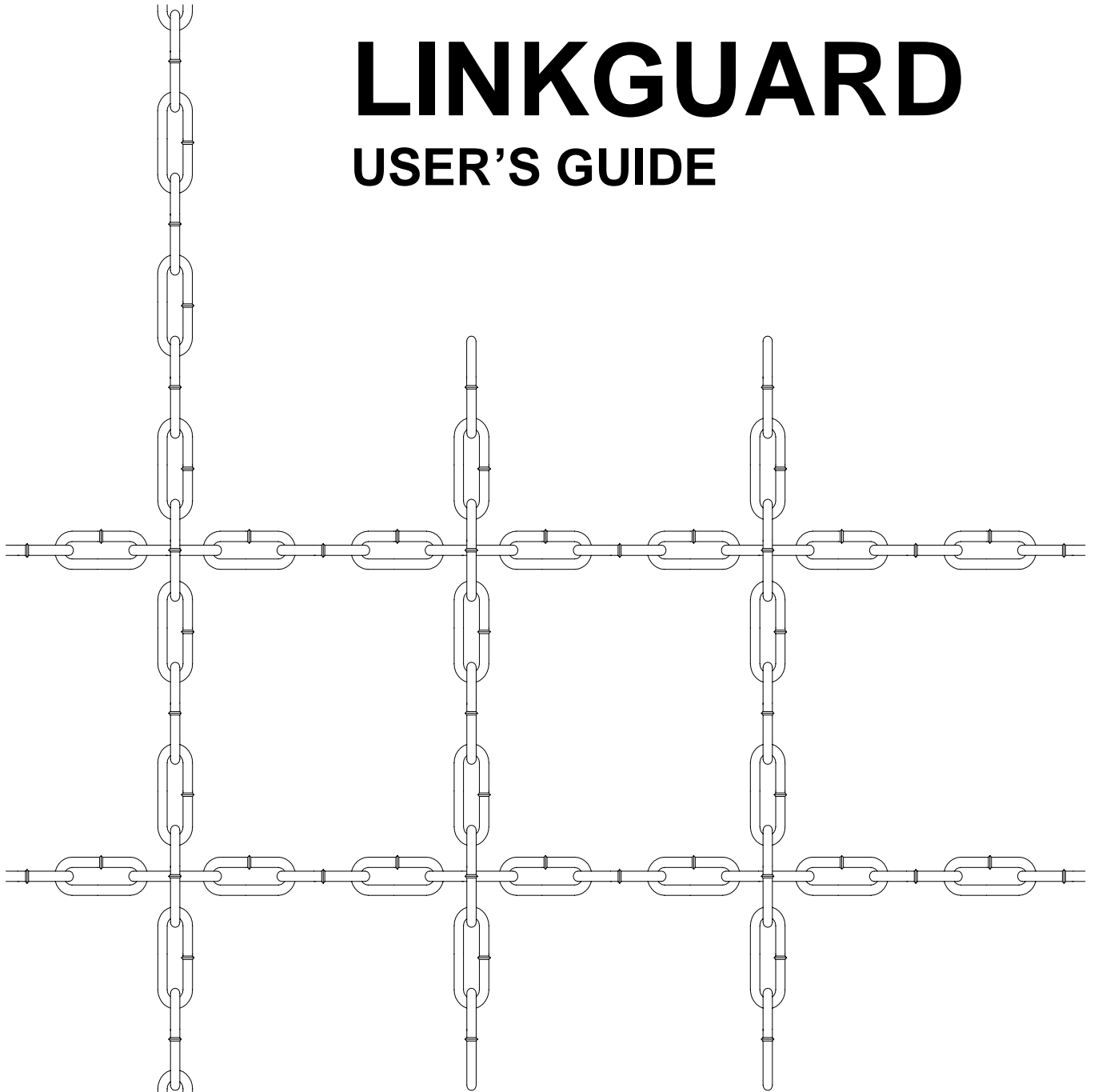


# LINKGUARD

## USER'S GUIDE



**R.O.M.**  
CORPORATION

*Excellence made to order.*



6800 East 163<sup>rd</sup>; Belton, MO 64012-5463

Phone: 800-827-3692 • 816-318-8000

Fax: 816-318-8100

FM-7.5-27  
Revision C  
4/14/05

### Locking your chain closure:

1. Turn the "L" handle to the downward position allowing the drop bolt to fall into the hole in the floor.
2. Insert your key into the cylinder lock and turn the key to the locking direction as illustrated in Fig. 1-1.
3. The key holder may preset the lock by following step 2 and leaving the "L" handle in the upward position as shown in Fig. 1-1. This allows a person without a key to lock the closure at a later time by following step 1.

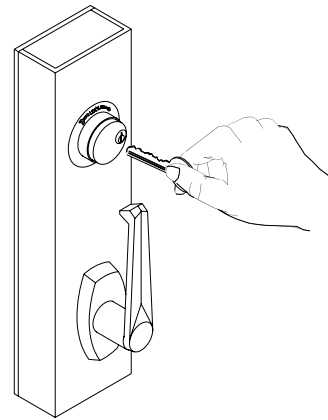


Fig. 1-1

### Opening your chain closure:

1. Unlock the closing channel and turn the "L" handle to the upward position to raise the drop bolt out of the hole in the floor.
2. Pull the bottom of the closing channel toward the storage area of the closure until the closing catch pin disengages from the locking block. See Fig. 1-2.
3. Go to the next vertical intermediate channel and repeat step 1. Do the same procedure for the remaining channels.
4. Stand at the stacking side of the closure and push the vertical channels toward the storage area one at a time until the entire closure is in its storage area. See Fig. 1-3.

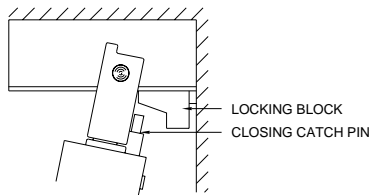


Fig. 1-2

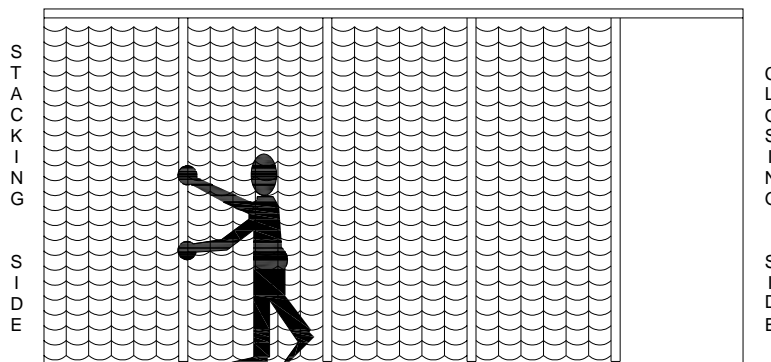


Fig. 1-3

## Closing your chain closure:

1. Pull the leading vertical channel across the opening until the entire closure has been removed from its storage area. See Fig. 1-4.
2. Starting with the storage end of the closure, begin locking all the vertical channels. Refer back to “Locking your chain closure” for locking instructions.
3. Single slide gate:
  - A. After all of the vertical channels have been locked finish closing by pushing the leading channel to the closing side. Engage the closing catch pin with the locking block as shown in Fig. 1-5
  - B. While the channel roller is engaged, move the lower part of the channel toward the jamb and engage the closing channel with the male lock block that is attached to the jamb.
4. Bi-Parting Gate:
  - A. After all of the vertical channels have been locked on both sides, finish closing the gate by pushing the leading channel of one side to the center of the closure. Do the same for the leading channel of the other side. Engage the closing catch pin with the locking block as shown in Fig. 1-5.
  - B. While the channel rollers are engaged, pull the lower portion of the channels together and engage the male lock block on one channel into the slot of the other channel. See Fig. 1-6.

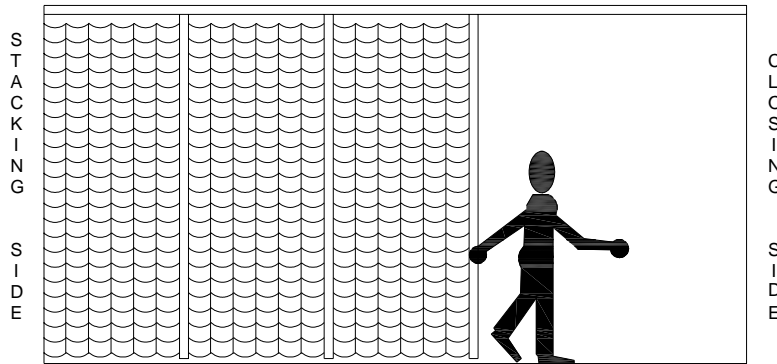


Fig. 1-4

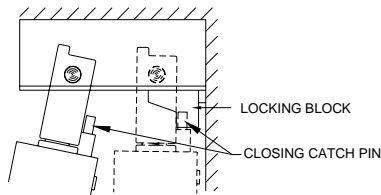


Fig. 1-5

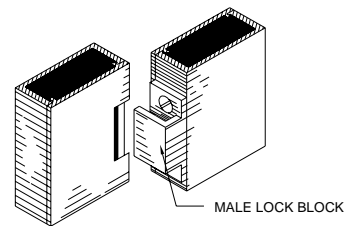


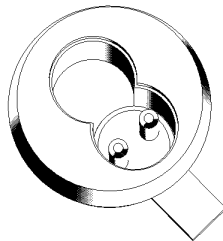
Fig. 1-6

**Interchangeable (IC) Core replacement instructions:**

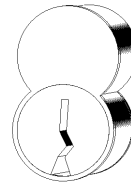
This gate is equipped with Mortise Housings and IC Cores. To remove the IC core on your gate follow these steps:

1. Insert the control key (located on the closing channel in a red envelope) in the IC core and turn the key 15° clockwise.
2. Contact a locksmith to adjust the throw pins if needed, and then reinstall the IC core into the mortise housing using the control key. Note: Make sure the cam is pointed away from the lock before installing the IC Core. See the Mortise Housing graphic below.
3. Turn the key 15° counterclockwise and remove the key.
4. Replace the control key in the envelope on the closing channel.

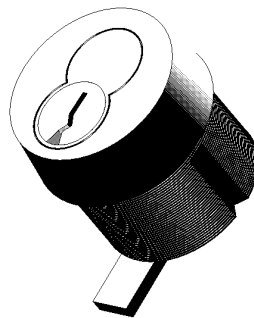
Please note: this control key is needed in order to remove the core.



Mortise Housing



IC Core



IC Core installed in  
Mortise Housing

Copyright © 2005 ROM Corporation. All Rights Reserved. These drawings and the information contained herein are the confidential and proprietary intellectual property of ROM Corporation and should not be disclosed to any third party without the express prior written consent of ROM Corporation