

## ***LINKSGUARD CLOSING CATCH TUBE ASSEMBLY***

This closing catch tube assembly will replace the current design on the closing channel. This design will not allow the stainless steel pin to be lost when opening the gate. Read the instructions completely before starting modifications.

FM-7.5-133  
Rev B  
2/10/2003

Your kit should contain the following parts:

- Stainless Steel Pin with Hole (1)
- Compression Spring with Hook and Loop (1)
- Male Closing Catch Tube (1)
- 3/16" Rivets (2)

In addition to the parts listed above you will need the following tools:

- Drill with a 13/64" drill bit
- Pop Rivet Gun
- 7/16" Socket and wrench

### **Installation Procedure:**

First, the channel carrier and current closing catch tube assembly will need to be removed. This can be done removing the nuts and bolts holding on the channel carrier and by drilling out the pop rivets on the closing catch tube. These closing catch tube parts will not be reused so they can be discarded. Once the old part has been removed the new assembly can be installed. To install the new assembly you will need to take the hook end of the spring and place in the hole on the stainless steel pin. Next, you will need to line up the top of loop on the spring with the holes on the male closing catch tube. Then using the stainless steel pin push the spring into the male closing catch tube until you are able to see the loop of the spring in the first hole. Now the closing catch tube assembly is ready to be installed on the closing channel with the enclosed pop rivets. For correct installation the pop rivet will need to go thru the loop on the spring. See installation layout in Figure 1. If installed correctly the pin and spring will not be able to be pulled out. Reinstall the channel carrier. This completes the installation of the new closing catch tube assembly. If you have any questions contact your R•O•M representative at 1-800-827-3692.

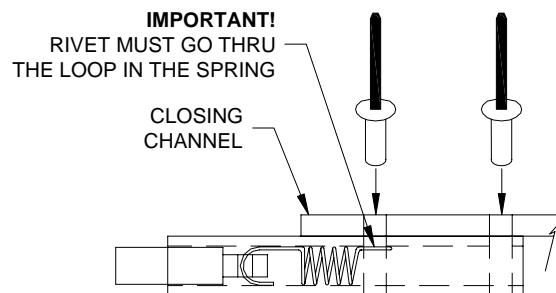


Figure 1