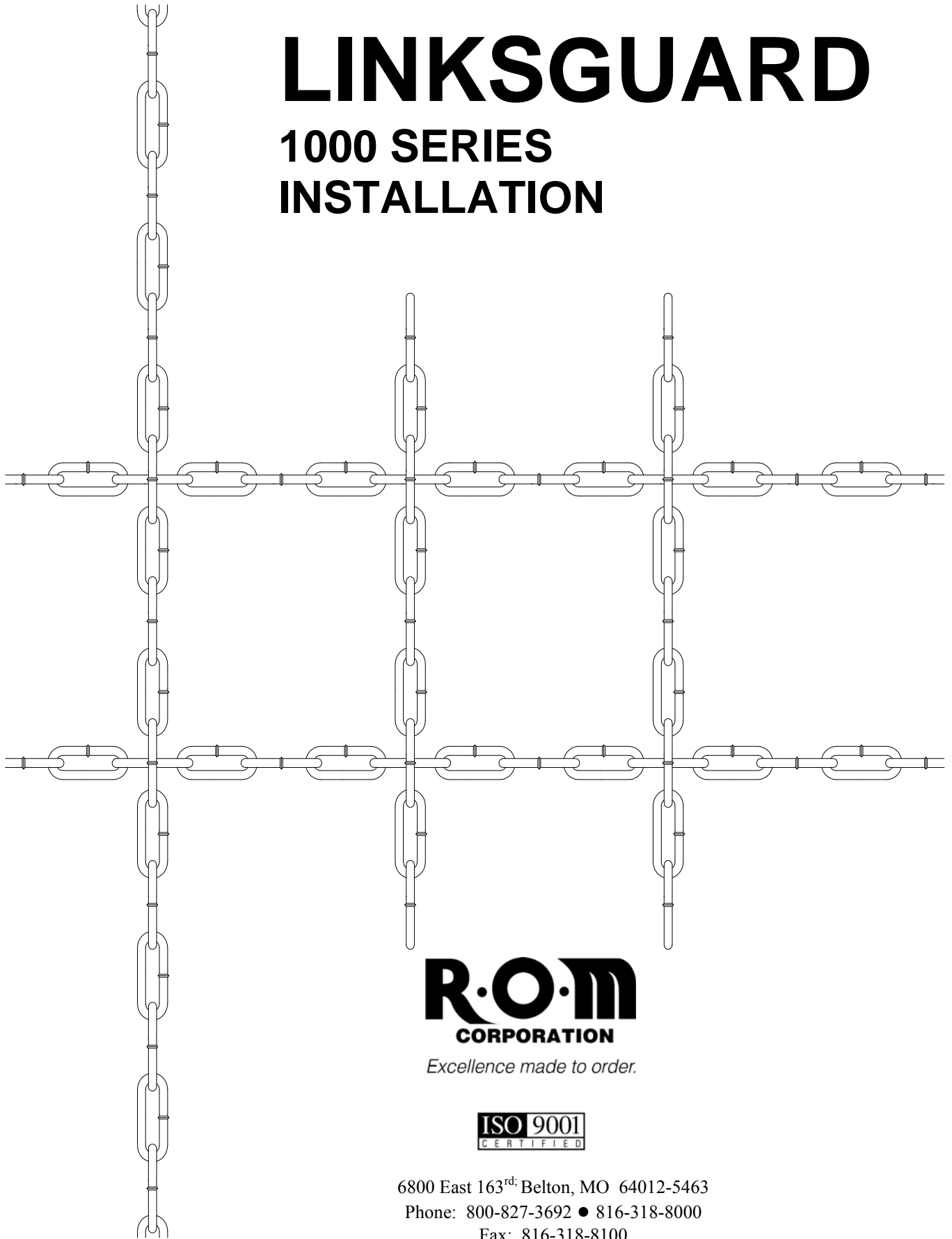


# LINKSGUARD

## 1000 SERIES INSTALLATION



**R.O.M.**  
CORPORATION

*Excellence made to order.*

**ISO 9001**  
CERTIFIED

6800 East 163<sup>rd</sup>: Belton, MO 64012-5463

Phone: 800-827-3692 • 816-318-8000

Fax: 816-318-8100

**PLEASE NOTE:** Measure the opening carefully and compare the dimensions with those on the gate drawing. If there are any discrepancies, please contact your R·O·M representative at 1-800-827-6392 before attempting the installation.

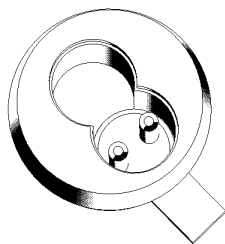
Be certain you are mounting into material capable of supporting the weight of the closure. R·O·M does not supply additional jamb or lintel support material or any fasteners to mount castings, etc.

After the closure has been installed, leave the keys and information packet with the owner. Review the Linksguard users guide with each person who will be operating the closure.

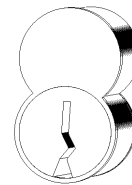
**Interchangeable (IC) Core replacement instructions:**

This gate is equipped with Mortise Housings and IC Cores. To remove the IC core on your gate follow these steps:

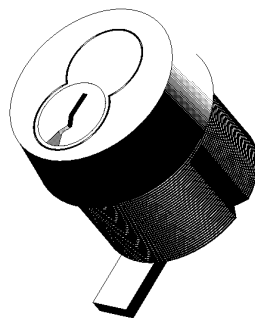
1. Put the control key (located on the closing channel in a red envelope) and turn the key 15° clockwise.
  2. Adjust the throw pins if needed, then put the core into the cylinder with the control key.
  3. Turn the key 15° counterclockwise and remove the key.
  4. Replace the control key in the envelope on the closing channel.
- Please note: this control key is needed in order to remove the core.



Mortise Housing



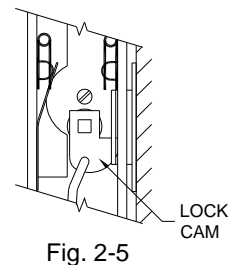
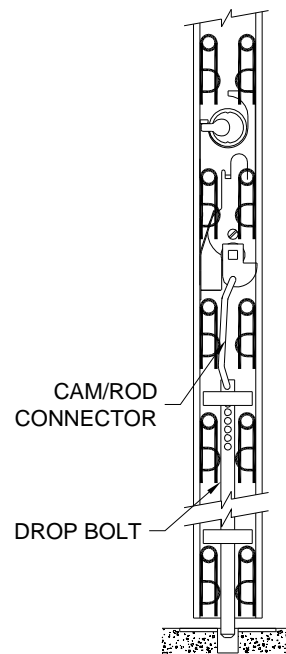
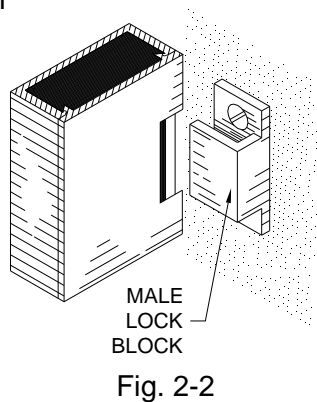
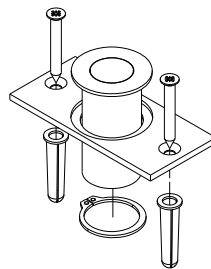
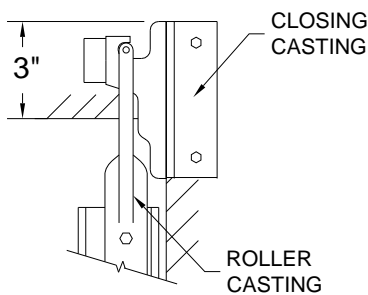
IC Core



IC Core installed in Mortise Housing

## Positioning & Securing the Single Slide Closing Channel

1. Mount the closing casting under the lintel. If the gate is to be face mounted place the closing casting 3" above the lintel. (Fig. 2-1)
2. Mount the roller casting to the closing channel. Position the roller casting on the closing casting. (Fig. 2-1)
3. Locate and mark the closing channel drop bolt center on the floor. A male lock block (Fig. 2-2) is provided for locking the midsection of the closing channel. Use the male lock block as a spacer between the channel and jamb to insure proper positioning.
4. Drill a  $\frac{3}{4}$ " diameter x  $1 \frac{3}{4}$ " deep hole into the floor where it is marked. If floor strike assemblies (Fig. 2-3) are required, the hole should be drilled  $1 \frac{3}{8}$ " x  $2 \frac{5}{16}$ " deep.
5. Calibrate the closing channel drop bolt by following these steps (shown in Fig. 2-4):
  - a. Remove the cam/rod connector from the drop bolt to allow the drop bolt to bottom out on the floor or in the floor strike.
  - b. Turn the "L" handle downward as far as possible.
  - c. Insert the cam/rod connector end back into the optimum hole.
  - d. Turn the "L" handle to retract drop bolt. Slide closure across the opening and check for clearance.
6. Lower the drop bolt into the floor. Place the male lock block into the closing channel.
7. After making certain the lock cam engages into the notch of the block as shown in Fig. 2-5, mark the position of the block on the jamb.
8. Open the channel and mount the male lock block securely to the jamb. If there is not a stud or backing plate, use toggle bolts or wall anchors. Check the operation of the closing channel to be sure it operates smoothly.



## Positioning & Securing the Bi-Parting Closing Channel

1. Mount the closing casting under the lintel. If the gate is to be face mounted place the closing casting 3" above the lintel. (Fig. 3-1)
2. Mount the roller casting to the closing channel. Position the roller casting on the closing casting. (Fig. 3-1)
3. Engage the midsections of the closing channel together with the male lock block. (Fig. 3-2)
4. Locate and mark both closing channel drop bolt centers on the floor.
5. Drill a  $\frac{3}{4}$ " diameter x  $1 \frac{3}{4}$ " deep hole into the floor where it is marked. If floor strike assemblies (Fig. 3-3) are required, the hole should be drilled  $1 \frac{3}{8}$ " x  $2 \frac{5}{16}$ " deep.
6. Calibrate the closing channel drop bolt by following these steps (shown in Fig. 3-4):
  - a. Remove the cam/rod connector from the drop bolt to allow the drop bolt to bottom out on the floor or in the floor strike.
  - b. Turn the "L" handle downward as far as possible.
  - c. Insert the cam/rod connector end back into the optimum hole.
  - d. Turn the "L" handle to retract drop bolt. Slide closure across the opening and check for clearance.
7. Check the operation of the closing channel to be sure it operates smoothly.

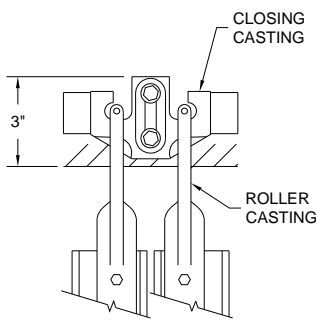


Fig. 3-1

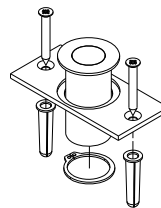


Fig. 3-3

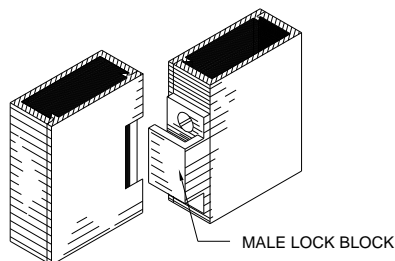


Fig. 3-2

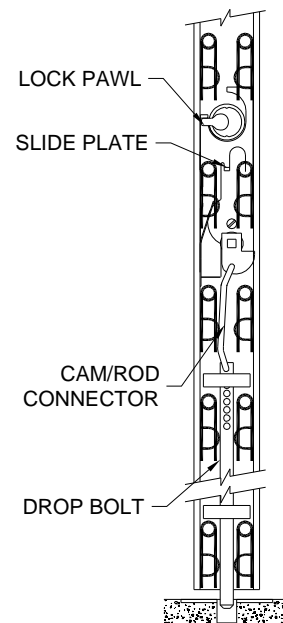


Fig. 3-4

## Hanging the Chain Gate Closure

1. Attach the pipe to the closing and stationary castings. Raise the stationary casting to the proper position and drill mounting holes. **DO NOT** permanently attach at this time.
2. Place the chain carriers with attached chain on the pipe with the eye facing toward the inside opening. (Fig. 4-1)
3. Attach the pipe to the closing and stationary castings with the swivels attached. Mount the stationary casting to the jamb, (Fig. 4-2)
4. Permanently mount the stationary channel to the jamb. The distance from the floor should be the same as the closing channels.

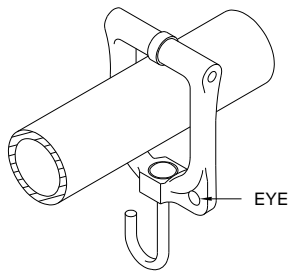


Fig. 4-1

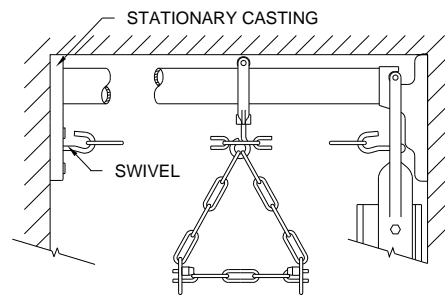


Fig. 4-2

## Attaching the Chain

1. Insert the leading horizontal link into its corresponding slot in the channel. Then place the chain retaining spring into the chain link as shown in Fig. 4-3. Repeat this procedure on all horizontal chains.

**PLEASE NOTE:** The spring coil on the chain retainer can be installed in either direction to fit around objects in the channel. Place the springs in the lock area so that they **DO NOT** interfere with the operation of the lock pawl or the slide plate. (Fig. 3-4 on page 4)

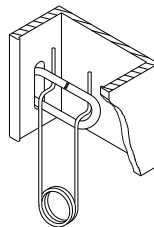


Fig. 4-3

## L-Clip Installation

1. Insert the end of the chain into the last slot located  $\frac{1}{2}$ " from the bottom of the channel. (Fig. 5-1)
2. Place the L-Clip over the chain, inside the channel. Making sure the longer leg is flush against the inside edge of the channel and the short leg is towards the bottom of the channel.

Note: Only one L-Clip is required per channel.

3. Install the chain retaining spring with the end of the chain against the L-Clip.

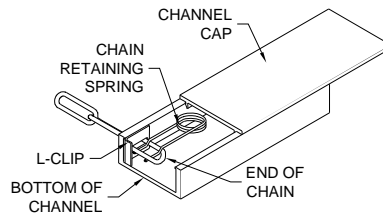


Fig. 5-1

## Completing the installation

1. Visually inspect the gate. The chain mesh should not have any slack. If slack is present, cut off the necessary links against the stationary channel and reattach the chain.
2. Before installing the cap in step 3, make sure the L-Clip in Fig. 5-1 is installed. This will keep the cap from dragging the ground if the cap slides easily in the channel.
3. Snap the caps on all channels using a rubber mallet (Fig. 5-2). The closing channel cap has a notch. This notch must be facing the male lock block for proper operation.

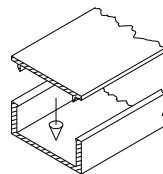


Fig. 5-2

**This completes the installation of your Linksguard 1000 series closure. If you have any questions contact your R-O-M representative at 1-800-827-3692.**

Copyright © 2010 ROM Corporation. All Rights Reserved. These drawings and the information contained herein are the confidential and proprietary intellectual property of ROM Corporation and should not be disclosed to any third party without the express prior written consent of ROM Corporation