



*Excellence made to order.*

R•O•M  
T-WARRIOR™  
BULKHEAD

PARTS  
MANUAL

FM-7.5-222  
Rev C  
02-23-09

**R•O•M Corporation**  
6800 East 163<sup>rd</sup> Street  
Belton, Missouri 64012

[www.romcorp.com](http://www.romcorp.com)  
[sales@romcorp.com](mailto:sales@romcorp.com)

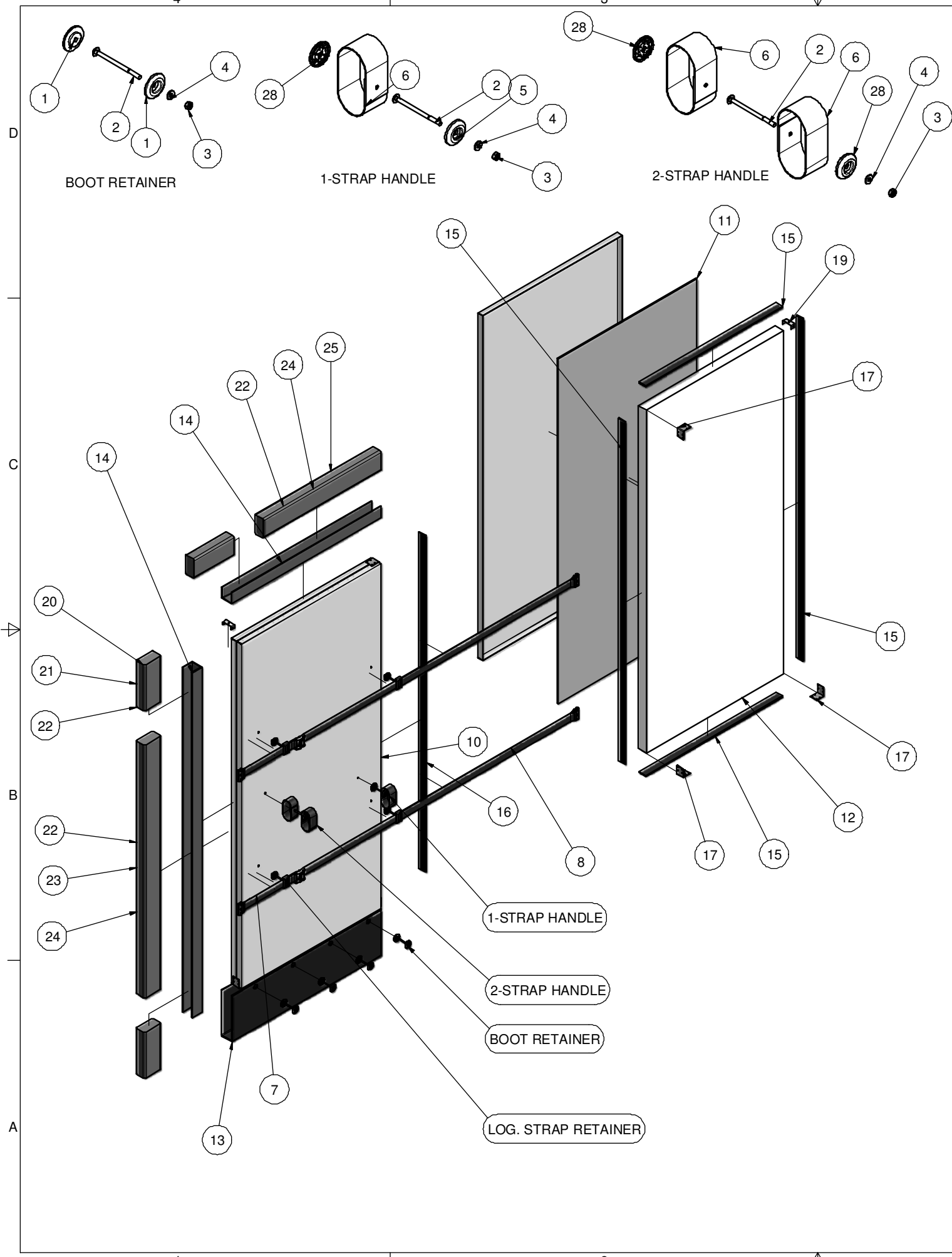
**Toll: 800-827-3692**  
Phone: 816-318-8000  
Fax: 816-318-8100

CONTENTS

T-WARRIOR™ TW1000 BI-FOLD BULKHEAD .....	1
T-WARRIOR™ TW1100 OFF-SET BULKHEAD w/ MAN DOOR .....	2

Copyright © 2009 R•O•M Corporation. All Rights Reserved.  
These drawings and the information contained herein are the confidential and proprietary intellectual property of R•O•M Corporation and should not be disclosed to any third party without the express prior written consent of R•O•M Corporation.


# T-WARRIOR -- TW1000 BI-FOLD BULKHEAD



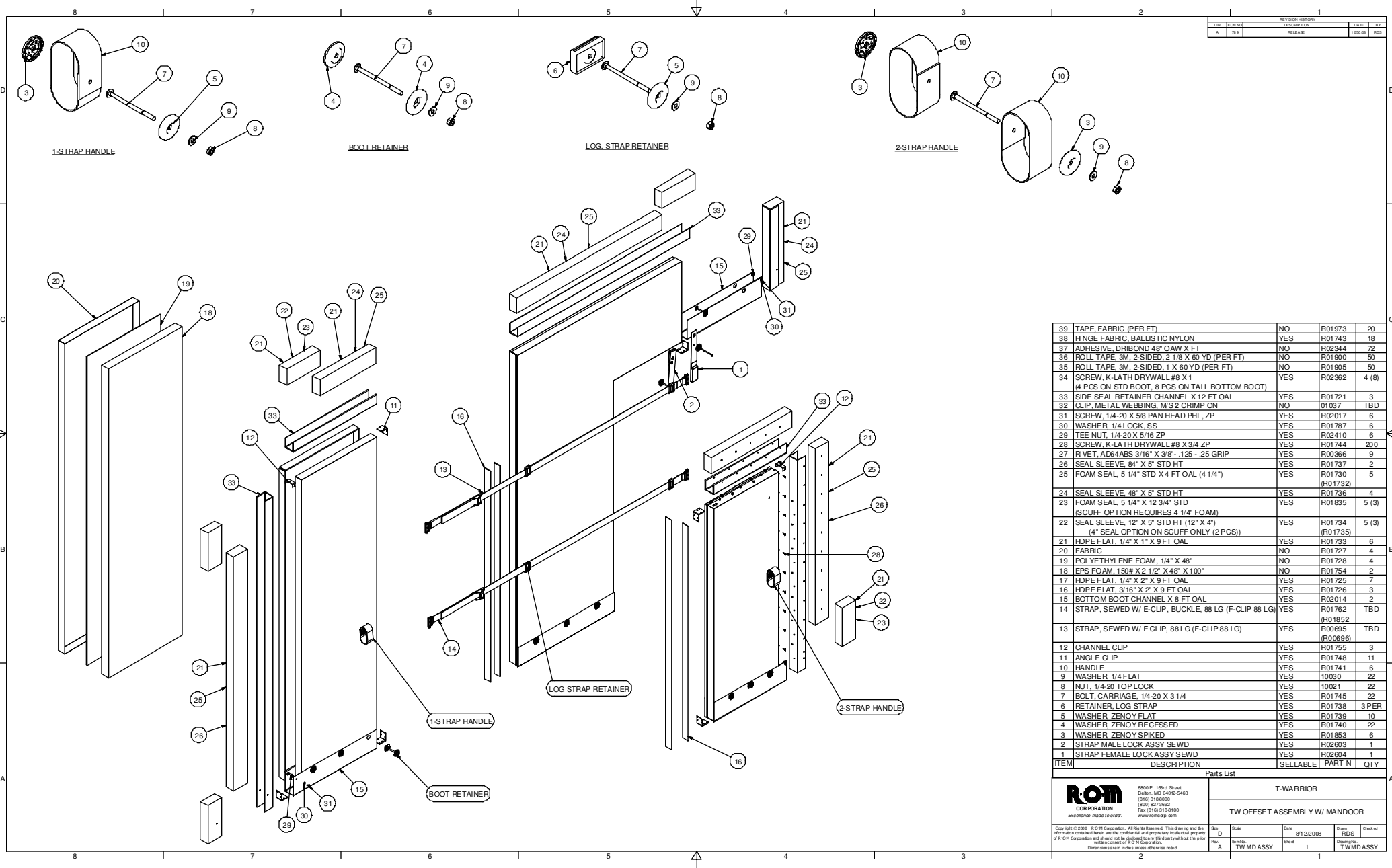
REVISION HISTORY				
LTR	ECN NO	DESCRIPTION	DATE	BY
A	N/A	PART CREATION	04/10/06	BAM
B	593	MODIFIED BOM TO SHOW LOGISTIC STRAP ASSY	07/28/06	BAM
C	602	ADDED R01853 WASHER, XENOY, FLAT TW	09/06/06	BAM
D	639	ADDED TEE NUT, SCREW AND FLAT WASHER	04/13/07	BAM
E	711	ADDED LONGER SCREW FOR BOTTOM BOOT	02/14/08	BAM
F	730	ADDED LOCK WASHER, DRIBOND, CHANGED TEE NUT	04/15/08	BAM

NO.	DESCRIPTION	SELLABLE	ITEM	QTY.
36	ADHESIVE DRIBOND 48" OAW X FT	NO	R02344	72
35	WASHER, LOCK, 1/4" SS	YES	R01787	4
34	SCREW, K-LATH DRY-WALL 8x1 ZP (4 PCS ON STD BOOT, 8 PCS ON TALL BOTTOM BOOT)	YES	R02362	4 (8)
33	TEE NUT 1/4-20 X 5/16 ZP	YES	R02410	4
32	PAN HD SCREW 1/4-20 X 5/8 ZP	YES	R02017	4
31	ROLL TAPE, 3M, 2-SIDED, 1 X 60 YD (PER FT)	NO	R01905	50
30	ROLL TAPE, 3M, 2-SIDED, 2 1/8 X 60 YD (PER FT)	NO	R01900	50
29	CLIP METAL WEBBING M/S 2 CRIMP-ON	NO	01037	TBD
28	WASHER, XENOY, SPIKED, TW	YES	R01853	6
27	RIVET AD64ABS 3/16X3/8H .125-.25GRP	YES	R00366	6
26	HINGE FABRIC, BALLISTIC NYLON	YES	R01743	1
25	SEAL SLEEVE, 48" x 5" STD HEIGHT	YES	R01736	2
24	FOAM SEAL, TW, 5 1/4" STD x 4' OAL (4 1/4")	YES	R01730 (R01732)	4.5
23	SEAL SLEEVE, 84" x 5" STD HEIGHT	YES	R01737	2
22	HDPE FLAT, 1/4" x 1"	YES	R01733	4.5
21	FOAM SEAL, TW, 5 1/4" STD x 12 3/4" LG [SCUFF OPTION REQUIRES 4 1/4" FOAM]	YES	R01835	6 (4)
20	SEAL SLEEVE, 12" x 5" STD HEIGHT (12" x 4") [4" SEAL OPTION ON SCUFF ONLY (2 PCS)]	YES	R01734 (R01735)	6 (4)
19	CHANNEL CLIPS, TW	YES	R01755	2
18	SCREW, K-LATH DRY-WALL 8x3/4 ZP	YES	R01744	200
17	ANGLE CLIPS, TW	YES	R01748	6
16	HDPE FLAT, 3/16" x 2" x 9' OAL	YES	R01726	2
15	HDPE FLAT, 1/4" x 2" x 9' OAL	NO	R01725	6
14	SIDE SEAL RETAINER CHANNEL, TW x 12' OAL	YES	R01721	2
13	BOTTOM BOOT CHANNEL, TW x 8' OAL	YES	R02014 drilled	1
12	EPS FOAM, 150# x 2 1/2 x 48 x 100	NO	R01754	2
11	POLYETHELENE FOAM, 1/4 x 48 (PCS)	NO	R01728	4
10	FABRIC, 18oz VCP x 50" WIDE, YELLOW (PCS)	NO	R01727	4
9	LOGISTIC STRAP RETAINER, TW	YES	R01738	# STRAPS X 3
8	STRAP SEW'D W/E-CLIP 88 LG NYLON (F-CLIP 88 LG)	YES	R00695 (R00696)	TBD
7	STRAP SEW'D W/E-CLIP/BCKL/STRAP RETAINER 17 LG NYLON (F-CLIP 17 NYLON)	YES	R01762 (R01852)	TBD
6	HANDLE, NYLON, TW	YES	R01741	6
5	WASHER, XENOY, FLAT TW	YES	R01739	10
4	1/4 FW Z	YES	10030	24
3	NUT, 1/4-20 TOP LOCK, ZP	YES	10021	26
2	BOLT, CARRIAGE, 1/4-20 x 3 1/4, ZP	YES	R01745	20
1	WASHER, XENOY, RECESSED TW	YES	R01740	16

Parts List

 <p>6800 E. 163rd Street Belton, MO 64012-5463 (816) 318-8000 (800) 827-3692 Fax (816) 318-8100 www.romcorp.com</p>	T-WARRIOR			
	TW-1000 BI-FOLD ASSEMBLY DRAWING			
Copyright © 2006 R-O-M Corporation. All Rights Reserved. This drawing and the information contained herein are the confidential and proprietary intellectual property of R-O-M Corporation and should not be disclosed to any third party without the prior written consent of R-O-M Corporation. Dimensions are in inches unless otherwise noted.	Size C	Scale NTS	Date 1/30/2006	Drawn BAM
	Rev. F	Item No. TW1000 Assembly	Sheet 1	Checked BAM
				Drawing No. TW1000 Assembly

# T-WARRIOR - TW1100 OFF-SET-BULKHEAD w/ MAN DOOR



REV. HISTORY		DATE	BY
NO.	DESCRIPTION		
A	RELEASE	1/09/08	RDS

39	TAPE, FABRIC (PER FT)	NO	R01973	20
38	HINGE FABRIC, BALLISTIC NYLON	YES	R01743	18
27	ADHESIVE, DURECO 48" OAW X FT	NO	R02344	72
36	ROLL TAPE, 3M, 2-SIDED, 2 1/8 X 60 YD (PER FT)	NO	R01900	50
35	ROLL TAPE, 3M, 2-SIDED, 1 X 60 YD (PER FT)	NO	R01905	50
34	SCREW, K-LATH DRYWALL #8 X 1 (4 PCS ON STD BOOT, 8 PCS ON TALL BOTTOM BOOT)	YES	R02362	4 (8)
33	SIDE SEAL RETAINER CHANNEL X 12 FT OAL	YES	R01721	3
32	CLIP, METAL WEBBING, M/S 2 CRIMP ON	NO	01037	TBD
31	SCREW, 1/4-20 X 5/8 PAN HEAD PHL, ZP	YES	R02017	6
30	WASHER, 1/4 LOCK, SS	YES	R01787	6
29	TEE NUT, 1/4-20 X 5/16 ZP	YES	R02410	6
28	SCREW, K-LATH DRYWALL #8 X 3/4 ZP	YES	R01744	200
27	RIVET, ADG4ABS 3/16" X 3/8", 125 - 25 GRIP	YES	R00366	9
26	SEAL SLEEVE, 64" X 5" STD HT	YES	R01737	2
25	FOAM SEAL, 5 1/4" STD X 4 FT OAL (4 1/4")	YES	R01730	5
24	SEAL SLEEVE, 48" X 5" STD HT	YES	R01736	4
23	FOAM SEAL, 5 1/4" X 12 3/4" STD (SCUFF OPTION REQUIRES 4 1/4" FOAM)	YES	R01835	5 (3)
22	SEAL SLEEVE, 12" X 5" STD HT (12" X 4") (4" SEAL OPTION ON SCUFF ONLY (2 PCS))	YES	R01734 (R01735)	5 (3)
21	HDPE FLAT, 1/4" X 1" X 9 FT OAL	YES	R01733	6
20	FABRIC	NO	R01727	4
19	POLYETHYLENE FOAM, 1/4" X 48"	NO	R01728	4
18	EPS FOAM, 150# X 2 1/2" X 48" X 100"	NO	R01754	2
17	HDPE FLAT, 1/4" X 2" X 9 FT OAL	YES	R01725	7
16	HDPE FLAT, 3/16" X 2" X 9 FT OAL	YES	R01726	3
15	BOTTOM BOOT CHANNEL X 8 FT OAL	YES	R02014	2
14	STRAP, SEWED W/ E-CLIP, BUCKLE, 88 LG (F-CLIP 88 LG)	YES	R01762	TBD
13	STRAP, SEWED W/ E CLIP, 88 LG (F-CLIP 88 LG)	YES	R00695 (R00696)	TBD
12	CHANNEL CLIP	YES	R01755	3
11	ANGLE CLIP	YES	R01748	11
10	HANDLE	YES	R01741	6
9	WASHER, 1/4 FLAT	YES	10030	22
8	NUT, 1/4-20 TOP LOCK	YES	10021	22
7	BOLT, CARRIAGE, 1/4-20 X 3 1/4	YES	R01745	22
6	RETAINER, LOG STRAP	YES	R01738	3 PER
5	WASHER, ZENYO FLAT	YES	R01739	10
4	WASHER, ZENYO RECESSED	YES	R01740	22
3	WASHER, ZENYO SPIKED	YES	R01853	6
2	STRAP MALE LOCK ASSY SEWD	YES	R02603	1
1	STRAP FEMALE LOCK ASSY SEWD	YES	R02604	1

ITEM		DESCRIPTION	SELABLE	PART N	QTY
Parts List					
		T-WARRIOR			
		TW OFFSET ASSEMBLY W/ MANDOOR			
<small>Copyright © 2008 ROM Corporation. All Rights Reserved. This drawing and the information contained herein are the confidential and proprietary intellectual property of ROM Corporation and should not be disclosed to any third party without the prior written consent of ROM Corporation. Dimensions in inches unless otherwise noted.</small>	<small>Size: A</small> <small>Scale: TW MD ASSY</small>	<small>Date: 8/12/2008</small> <small>Sheet: 1</small>	<small>Drawn: RDS</small> <small>Checked: TW MD ASSY</small>	<small>Drawn: RDS</small> <small>Checked: TW MD ASSY</small>	<small>Check of: TW MD ASSY</small>